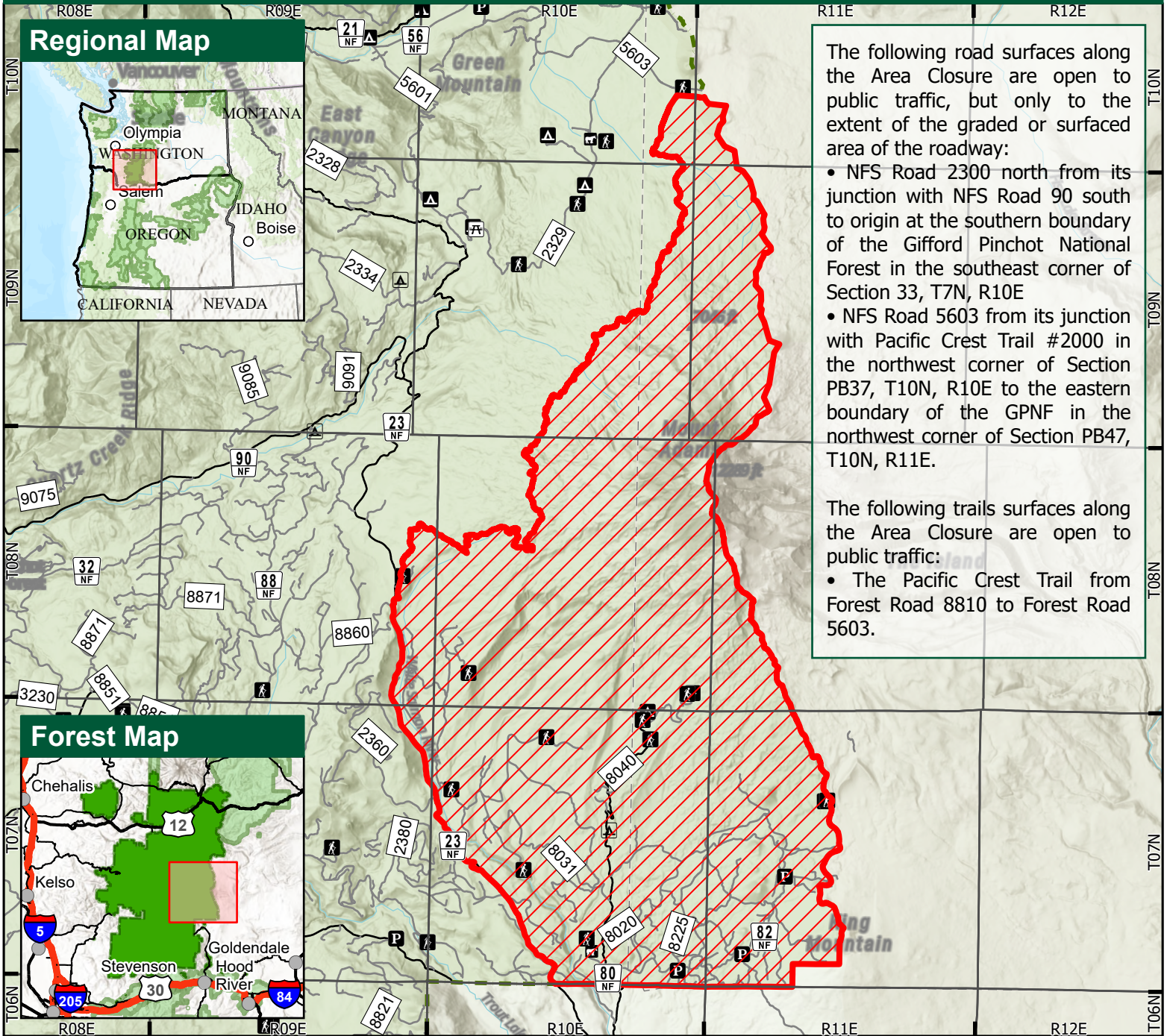




Williams Mine Fire Closure Exhibit A

Closure Number 06-03-03-24-04

Gifford Pinchot National Forest
Pacific Northwest Region

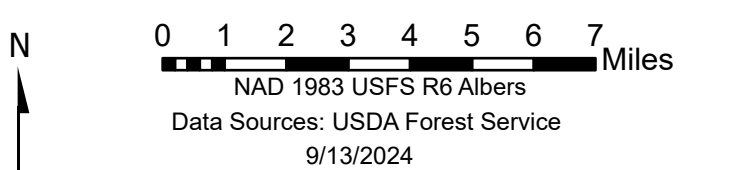


The following road surfaces along the Area Closure are open to public traffic, but only to the extent of the graded or surfaced area of the roadway:

- NFS Road 2300 north from its junction with NFS Road 90 south to origin at the southern boundary of the Gifford Pinchot National Forest in the southeast corner of Section 33, T7N, R10E
- NFS Road 5603 from its junction with Pacific Crest Trail #2000 in the northwest corner of Section PB37, T10N, R10E to the eastern boundary of the GPNF in the northwest corner of Section PB47, T10N, R11E.

The following trails surfaces along the Area Closure are open to public traffic:

- The Pacific Crest Trail from Forest Road 8810 to Forest Road 5603.



MAP LEGEND

Area Closure	Roads Suitable for Passenger Cars
USFS Admin Boundary	High Clearance Vehicles
National Forest Land	Township/Range Grid

USDA is an equal opportunity provider, employer and lender. This product is reproduced from geospatial information prepared by the USDA Forest Service. Geospatial information and Geographic Information Systems (GIS) product accuracy may vary. Using GIS products for purposes other than those for which they were created may yield inaccurate or misleading results. USDA Forest Service reserves the right to correct, update, modify or replace GIS products without notification